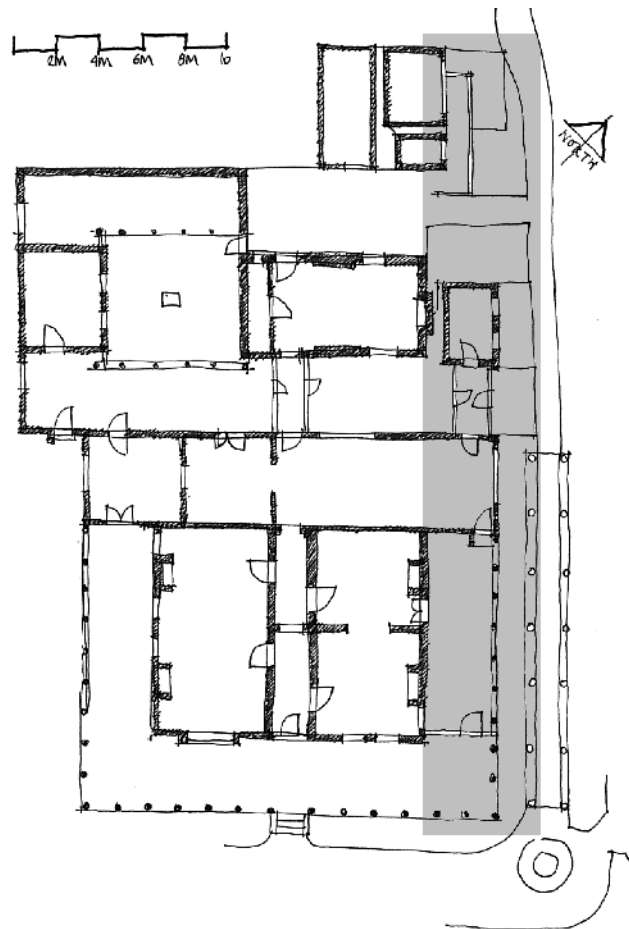


KEY PLAN



ROOM NAME/SPACE

The north-east elevation of colonnade elevation

HISTORICAL OVERVIEW/SOURCES & ASSOCIATIONS

Refer sequential plans c.1912 to 1990, Volume 1.
Refer c.1920 photograph of north-east elevation, **Figure 5**, Illustrated Chronology

Following the radical reconfiguration of the house verandah by the Lindsays, the eastern verandah was widened and a 'sleepout' space provided within the verandah. The verandah enclosures were subsequently extended over the years to their present form.

Refer **Figures 21, 22, 28, 32** etc. Illustrated Chronology

Initially the kitchen/bathroom wing was separated from the main house, but Norman Lindsay ensured some 'stylistic' references in the added bathroom by placing engaged columns to the façade. In the mid-1920s the colonnaded pergola was constructed. The columns of the colonnade were formed and constructed by Norman Lindsay, and the colonnade formed the backdrop for many Lindsay photographs.

Refer sequential plan for 1940 and **Figures 38 and 71**, Illustrated Chronology

The colonnaded north-east elevation being sunny and open to the rolling lawns, came to be the popular location for the Lindsay family photographs. The bathroom and house were joined [in the 1930s] by a grape vine clad pergola, but this pergola had been replaced by the present passage c.1935.

This facade is largely concealed by the wisteria covered colonnade however the bathroom corridor and originally separate bathroom building remain visible. Note the intrusive doors to the air conditioning plant.
RD photograph 1997



This elevation has not changed radically since that time, apart from the completion of the verandah enclosures just prior to the National Trust occupancy, in order to form a visitor entry, bookshop and reception area.

ROOM OR SPACE DESCRIPTION

Floor: Concrete with carpet squares

Walls: Sandstone dwarf wall, engaged columns, and timber window joinery.

Ceilings: Raking ceilings originally with exposed rafters, now with plaster lining.

COMPARATIVE SIGNIFICANCE RATING

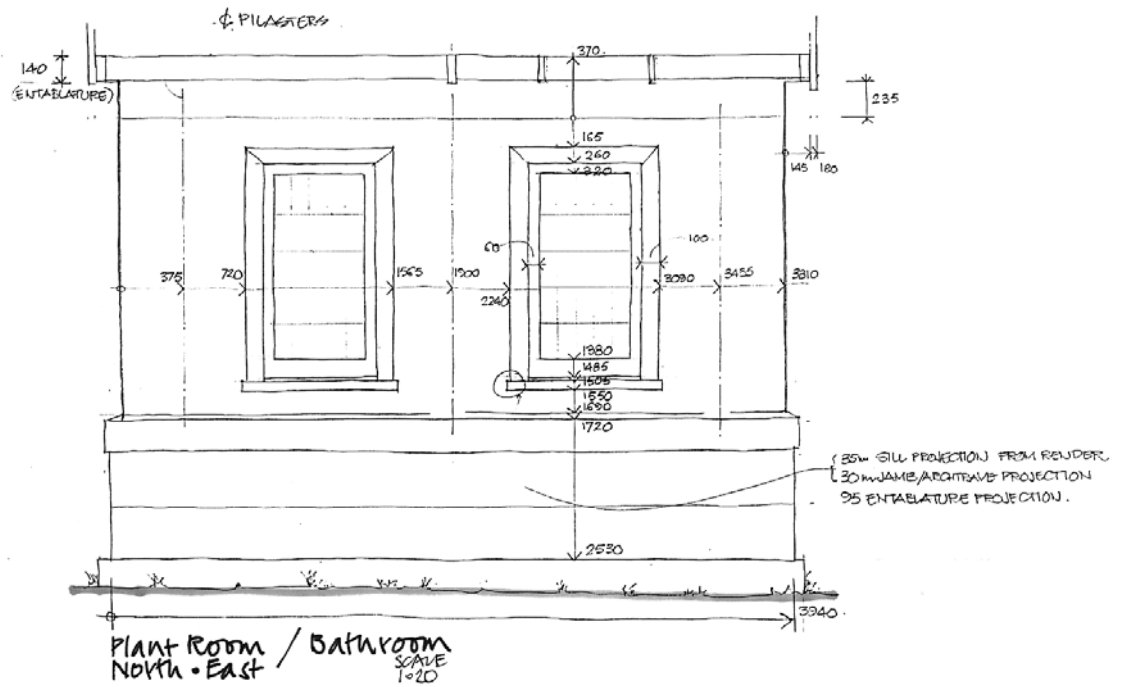
3 : High cultural significance

COMPARATIVE CONSERVATION/WORKS STRATEGY RATING

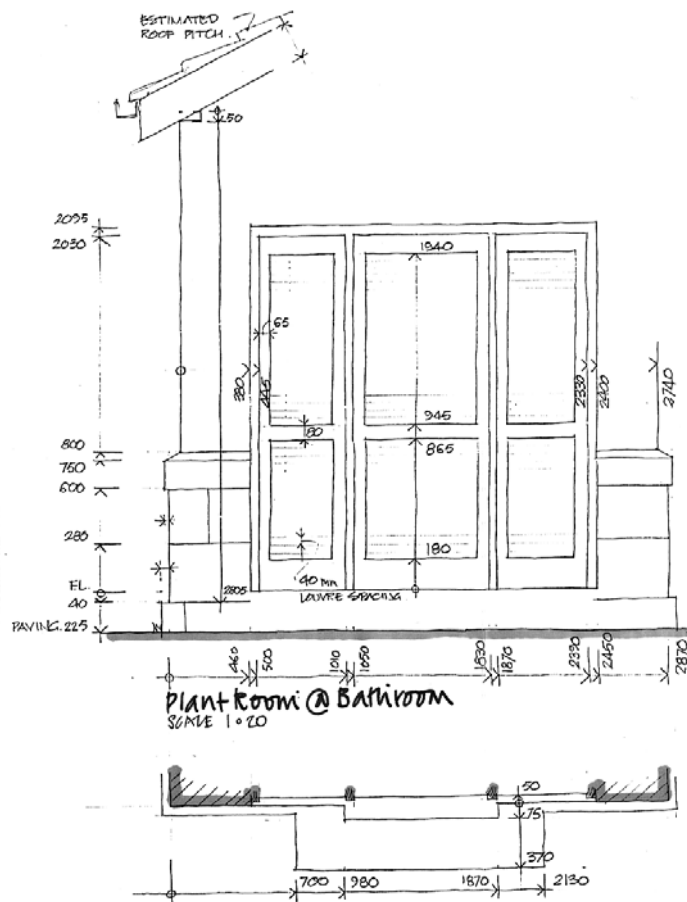
Routine conservation maintenance RCM

Relocate air conditioning plant and reinstate north-west elevation of former bathroom.

THE NORMAN LINDSAY GALLERY PRECINCT • SPRINGWOOD
 CONSERVATION MANAGEMENT PLAN INVENTORY • VOLUME 2 OF 4
 MAIN HOUSE • NORTH-EAST ELEVATION



Plant Room/Bathroom,
 north-east elevation.
 Neil Patrick plan, 1996



Plant Room, north-west
elevation
Neil Patrick plan, 1996