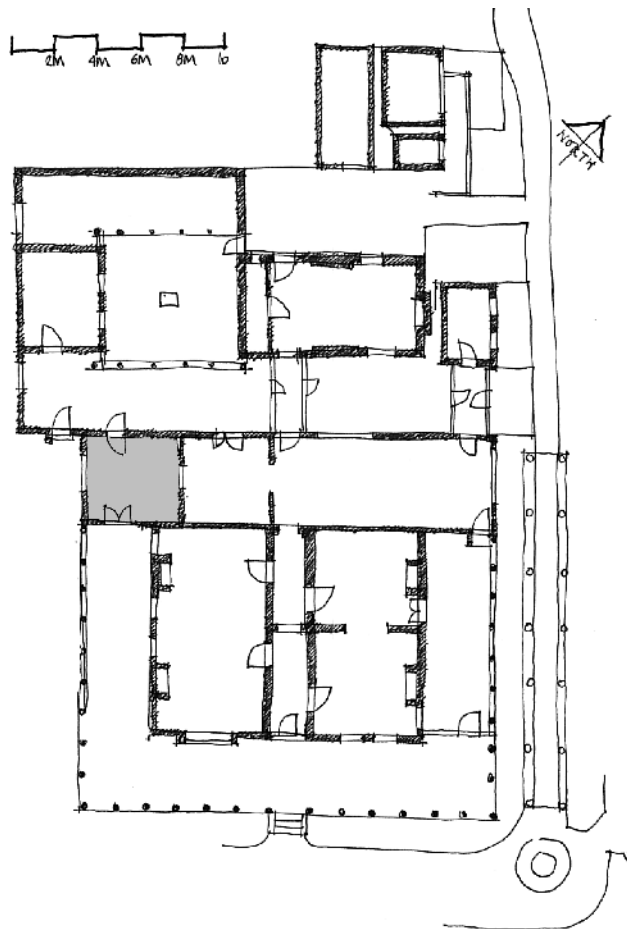


KEY PLAN



ROOM NAME / CURRENT & PREVIOUS NAMES

Room 10

Currently used as a store for the Norman Lindsay Gallery shop.
Formerly used as a bedroom.

HISTORICAL OVERVIEW / SOURCES & ASSOCIATIONS

This room was part of the four room extension constructed in 1920. It was used mainly as a guest's bedroom and it still remains basically as it was. The only change, made by the NTA, has been the creation of the opening into the sewing room for the housing of the puppet display.

ROOM OR SPACE DESCRIPTION

Principal Elements

Floors: Timber

Walls generally: Plastered masonry walls

Ceiling: Coffered plaster ceiling

General trims: Timber joinery, picture rail, French doors to south-west verandah



Room 10, currently used for storage for the Norman Lindsay Gallery shop.
PF photograph 1998

Modifications

Creation of the opening into the sewing room.
Storage racks for Norman Lindsay Gallery store room

Services

Light and power

COMPARATIVE SIGNIFICANCE RATING

3 : High cultural significance

COMPARATIVE CONSERVATION/WORKS STRATEGY RATING

RCM Routine conservation maintenance

CP Conservation and interpretation policy to be in alignment with this Conservation Management Plan [refer Volume 4]. Note that it is a policy recommendation that this storage function be relocated; and that this room be made available for Gallery purposes.