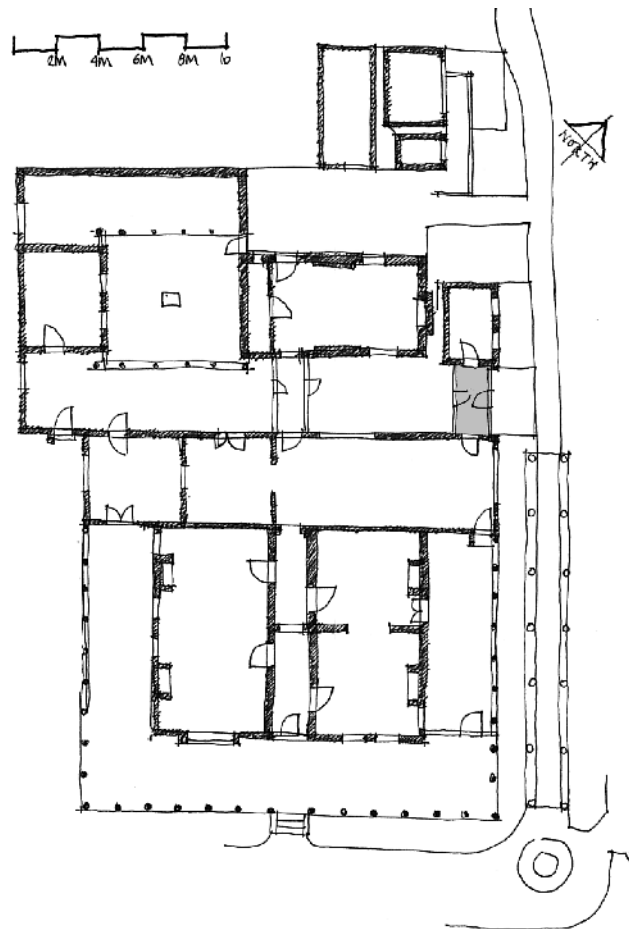


### KEY PLAN



### ROOM NAME / CURRENT & PREVIOUS NAMES

#### Room 11

Currently used as toilet and store room  
Formerly bathroom corridor

### HISTORICAL OVERVIEW / SOURCES & ASSOCIATIONS

Refer to Illustrated Chronology figures [before the corridor's construction] 14, 39, 48 [after the corridor's construction] 64, 65, 71, 72, 98, 120, 125, 129, 153.

The corridor which originally connected the bathroom with the nursery, was constructed in 1933. Previously there had been a pergola across the space between the nursery and dining room, and the kitchen, covered in an Isobella grapevine. There was a door way on both sides of the corridor, one leading to the small courtyard which was formed and the other to the garden.

### ROOM OR SPACE DESCRIPTION

#### Principal Elements

*Floors:* Timber floor boards

*Walls generally:* Glazed windows to corridor

*Ceiling:* Plasterboard ceiling

Store section of former bathroom corridor. This area was originally a covered way formed between the main house and the separate bathroom building. It was later enclosed and during NTA ownership a section was annexed to form a toilet. The former bathroom [now AC plant room] is accessed externally.  
**PF photograph 1998**



#### **Modifications**

Addition of bathroom [construction of dividing wall]

#### **Services**

Water and electricity

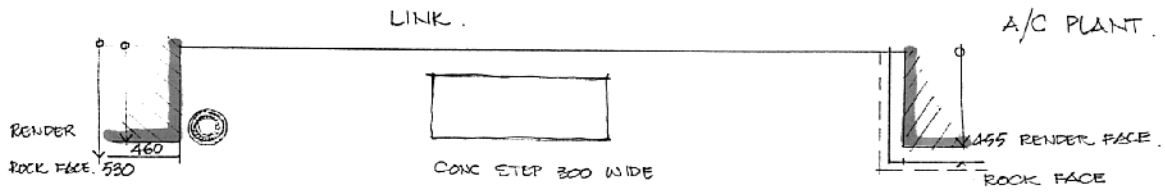
#### **COMPARATIVE SIGNIFICANCE RATING**

3 : High cultural significance

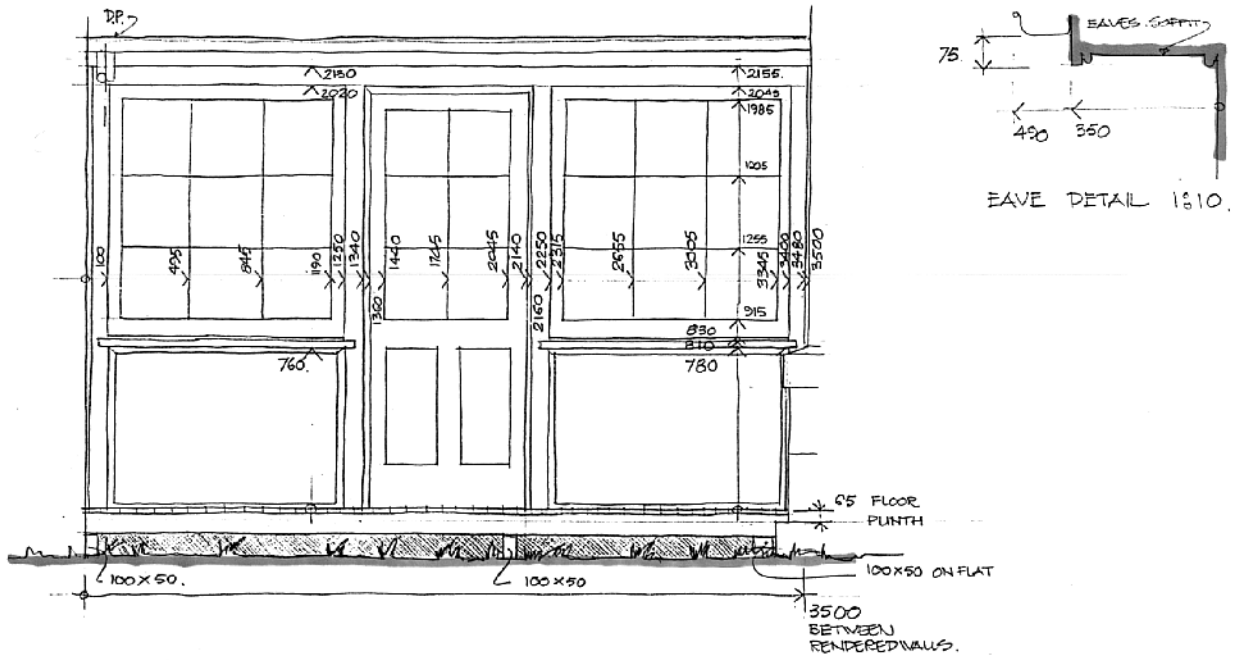
#### **COMPARATIVE CONSERVATION/WORKS STRATEGY RATING**

*RCM* Routine conservation maintenance

*CP* Conservation and interpretation policy to be in alignment with this Conservation Management Plan [refer Volume 4].



Plan & Elevation of Bathroom Corridor SCALE 1:20



Bathroom corridor, north-east elevation.  
 Neil Patrick plans, 1996