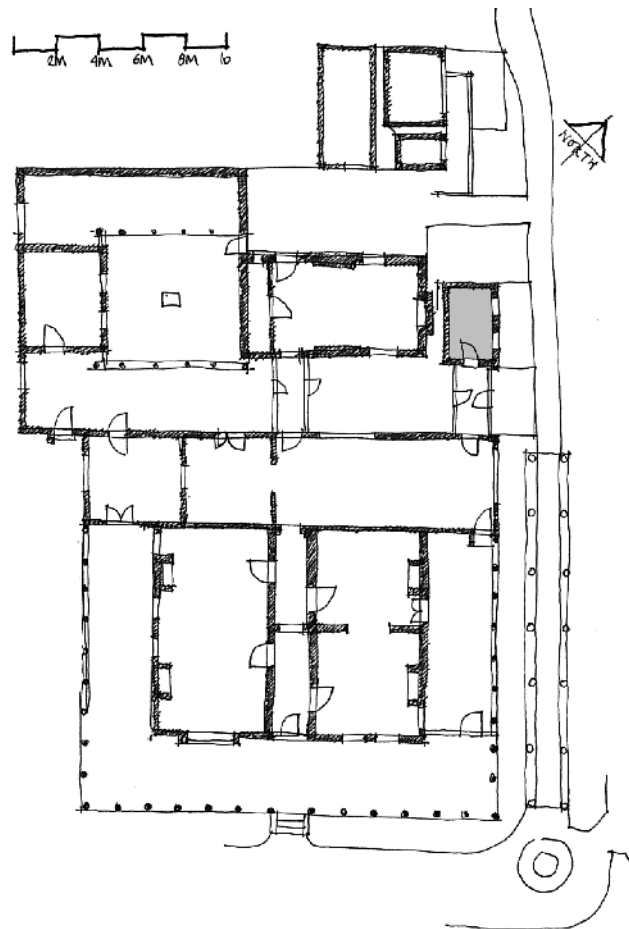


KEY PLAN



ROOM NAME / CURRENT & PREVIOUS NAMES

Room 12

Currently used as air conditioning plant room.
Formerly bathroom.

HISTORICAL OVERVIEW / SOURCES & ASSOCIATIONS

Refer to Illustrated Chronology
figures 14, 39, 64, 68, 109
(outside toilet), 125.

The bathroom was built in 1920, at the time of the birth of Rose and Norman Lindsay's first child Jane, and was retiled in 1924. The toilet was added in 1946 when a septic system was installed, ending the use of the outside lavatory. From this time the washing machine was also located in this room. The AC Plant was inserted into this space by the NTA NSW to provide Gallery conditioning. This modification required the installation of gridded doors to the north-west elevation.

ROOM OR SPACE DESCRIPTION

Note: this space was not inspected or photographed internally.

Principal Elements

Floors : Tiled floor

Walls generally: Masonry walls

Services

Water and electricity

COMPARATIVE SIGNIFICANCE RATING

3 : High cultural significance

COMPARATIVE CONSERVATION/WORKS STRATEGY RATING

RCM : Routine conservation maintenance

CP Conservation and interpretation policy to be in alignment with this Conservation Management Plan [refer Volume 4]. Note that it is the intention of this CMP that this room be returned to its former use.