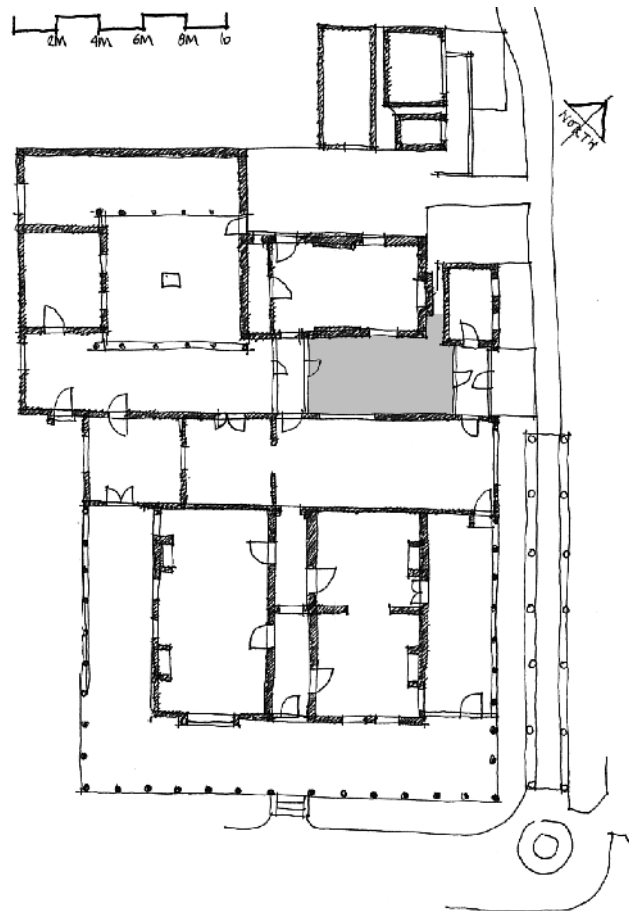


KEY PLAN



ROOM NAME/CURRENT & PREVIOUS NAMES

Courtyard 2, Room 13

HISTORICAL OVERVIEW/SOURCES & ASSOCIATIONS

The space was created c1933 when the bathroom corridor was constructed. Before 1933 there was a pergola with an Isobella grapevine in this location. This grape vine has been replanted by the NTA NSW in its 'historical' location, c.1998.

ROOM OR SPACE DESCRIPTION

Courtyard created between the extended Lindsay house and the original kitchen.

COMPARATIVE SIGNIFICANCE RATING

3 : High cultural significance

COMPARATIVE CONSERVATION/WORKS STRATEGY RATING

RCM Routine conservation maintenance
CP Conservation and interpretation policy to be in alignment with this Conservation Management Plan [refer Volume 4].

