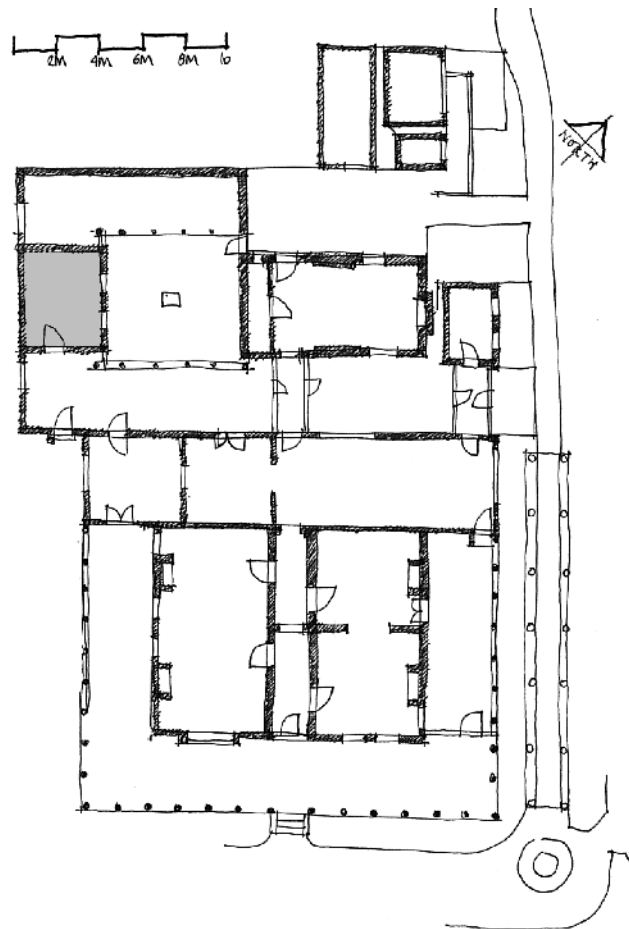


KEY PLAN



ROOM NAME / CURRENT & PREVIOUS NAMES

Store Room, Room 18

HISTORICAL OVERVIEW / SOURCES & ASSOCIATIONS

This room was built as a storeroom at the same time as the courtyard in 1924. It is still used for its original purpose and remains unchanged except for the addition of a sliding picture racking system and a climate control system by the NTA NSW.

ROOM OR SPACE DESCRIPTION

Principal Elements

Floors: : Timber floor boards.

Walls generally: Rendered masonry walls

Ceiling: Not known



Storeroom. This room has always been used for artwork storage, however it has only recently been modified with climate control and storage mechanisms.

PF photograph 1998

Modifications

The addition of a climate control system by NTA and framed storage arrangement.

Services

Electricity, air conditioning

COMPARATIVE SIGNIFICANCE RATING

3 : High cultural significance

COMPARATIVE CONSERVATION/WORKS STRATEGY RATING

RCM Routine conservation maintenance

CP Conservation and interpretation policy to be in alignment with this Conservation Management Plan [refer Volume 4].