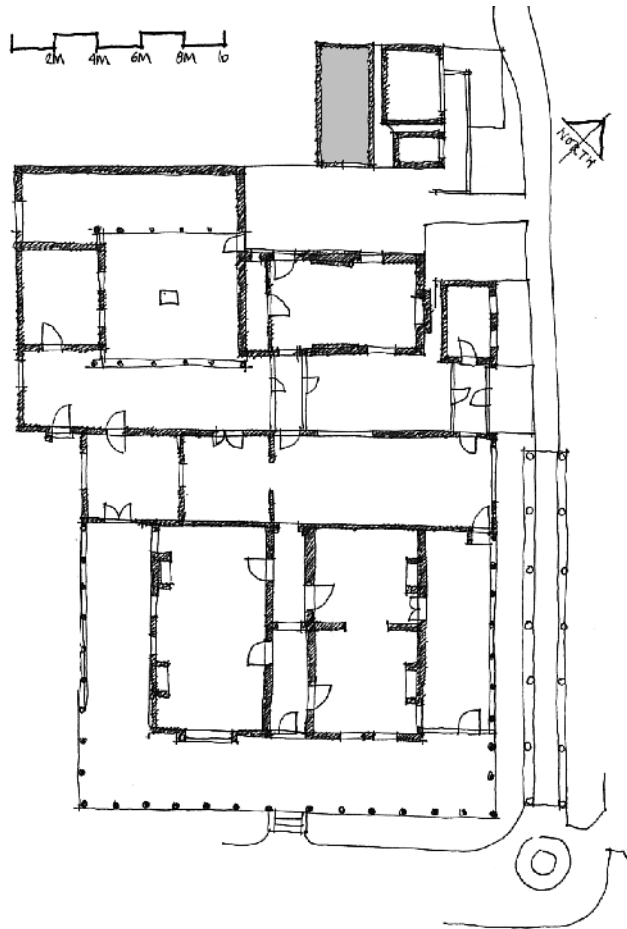


KEY PLAN



ROOM NAME / CURRENT & PREVIOUS NAMES

Toilets Room 1
Currently Female Toilet
Formerly used as Laundry

HISTORICAL OVERVIEW / SOURCES & ASSOCIATIONS

Refer to Illustrated Chronology
figures 60, 105, 143, 152, 157.

New Female Toilets, built by NTA NSW c.1973 adjacent original 'Lindsay' laundry [now Male Toilets].

ROOM OR SPACE DESCRIPTION

Principal Elements

Floors: Concrete

Walls generally: Plastered masonry walls

Ceiling: Not known



Ladies toilet
PF photograph 1998

COMPARATIVE SIGNIFICANCE RATING

1 : Slight cultural significance

COMPARATIVE CONSERVATION /WORKS STRATEGY RATING

RCM Routine conservation maintenance

CP Conservation and interpretation policy to be in alignment with this Conservation Management Plan [refer Volume 4].